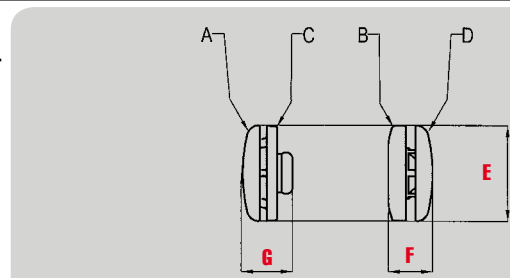
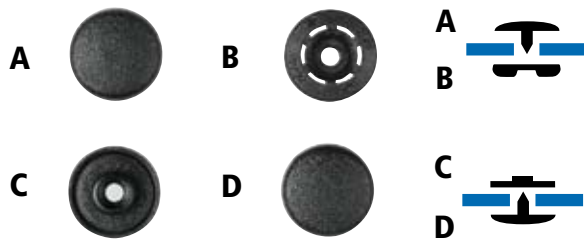


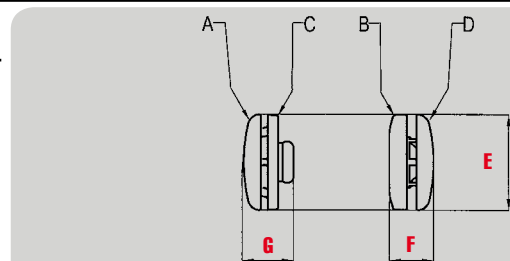
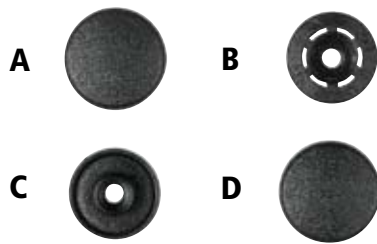
Bottoni e rivetti
Snaps and rivets

PRESS 12.5



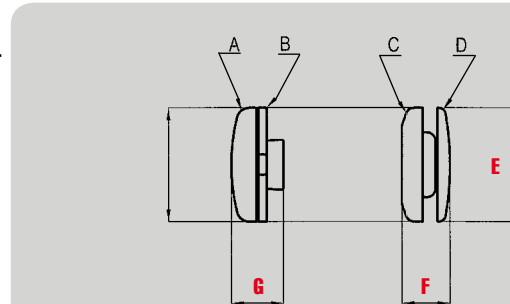
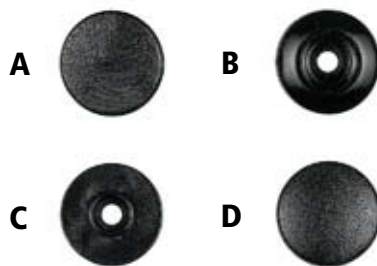
MOD.	MAT.	COL.	E	F	G
PRESS 12.5	A	Std.	Ø 12.5	5.5	6.5

PRESS 12.5 C14



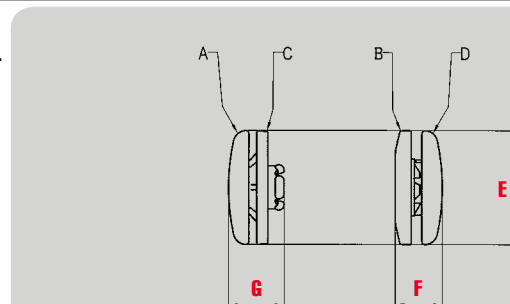
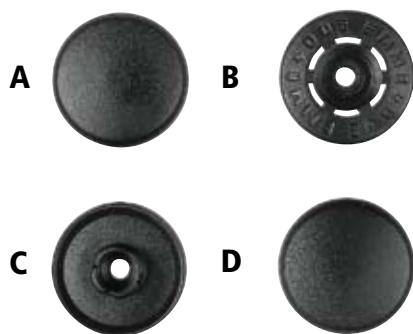
MOD.	MAT.	COL.	E	F	G
PRESS 12.5C14	A	Std.	Ø 14	5.5	6.5

PRESS/14



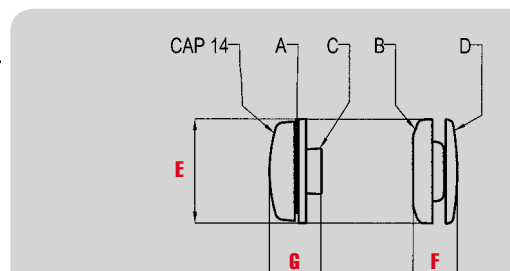
MOD.	MAT.	COL.	E	F	G
PRESS 14	A	Std.	Ø 14	5.8	6.2

PRESS/18



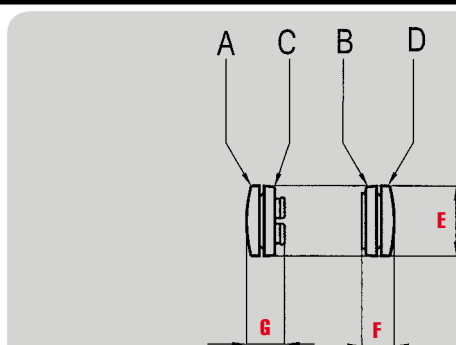
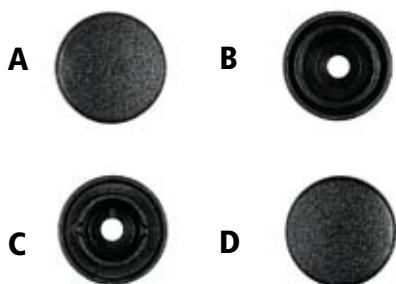
MOD.	MAT.	COL.	E	F	G
PRESS 18	A	Std.	Ø 18	7.5	8.5

PRESS/14 RC



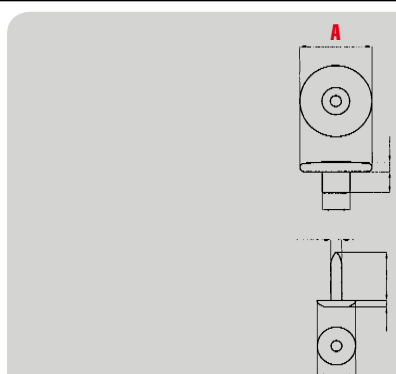
MOD.	MAT.	COL.	E	F	G
PRESS/14 RC	A	Std.	Ø 14	5.8	6.7

KAPPA/14



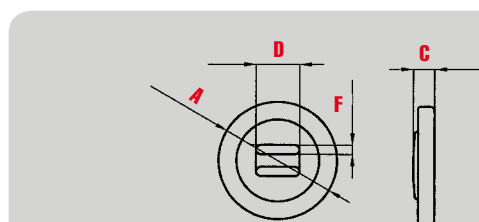
MOD.	MAT.	COL.	E	F	G
KAPPA/14	A	Std.	Ø 14.5	6.5	8

BJ/17



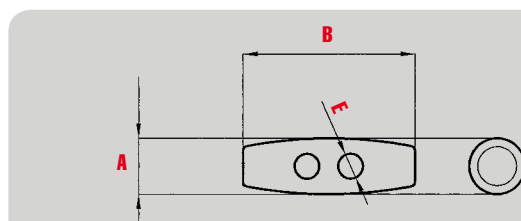
MOD.	MAT.	COL.	A	C	D
BJ/17	N	Std.	Ø 17	13	2

BF



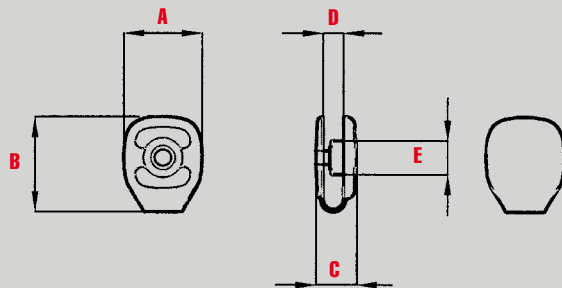
MOD.	MAT.	COL.	A	C	D	F
BF/20	NIR	B-W	Ø 20	3.7	8.8	2.2
BF/25	NIR	B-W	Ø 25	4.7	10.7	2.4
BF/30	NIR	B-W	Ø 30	5.4	11	2.4

OL2



MOD.	MAT.	COL.	A	B	E
OL/2 30	N	B-W	10	30.5	Ø4.7
OL/2 35	N	B-W	11.2	35.5	Ø5.1
OL/2 40	N	B-W	13.5	42	Ø5.3

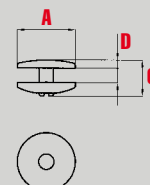
AMR



MOD.	MAT.	COL.	A	B	C	D	E
AMR	A	Std.	11.5	14	6	3	Ø 5

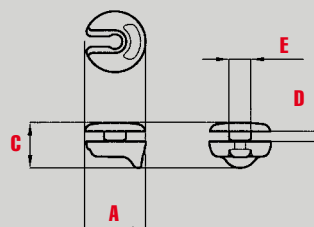
RIVETTI MANUALI
MANUAL RIVETS

RV



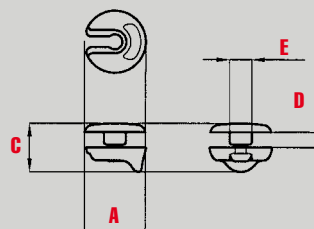
MOD.	MAT.	COL.	A	C	D
RV/3	N	Std.	Ø 12	7.5	3
RV/5	N	Std.	Ø 12	9.3	5

RA 14/2.5



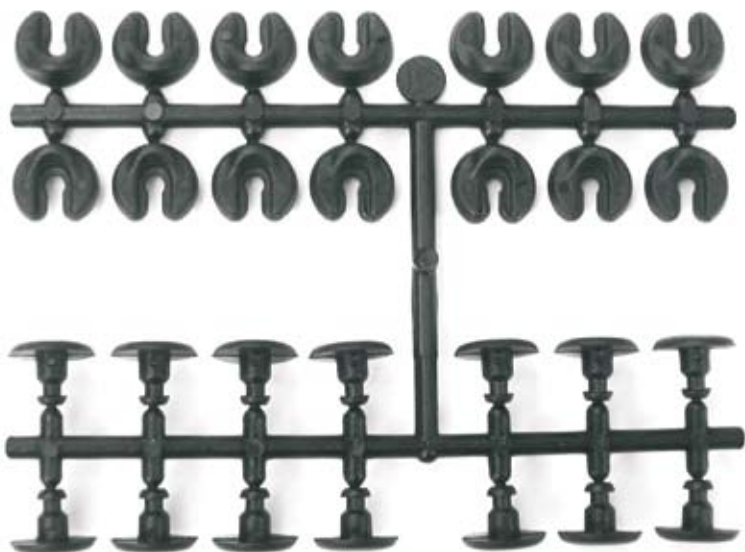
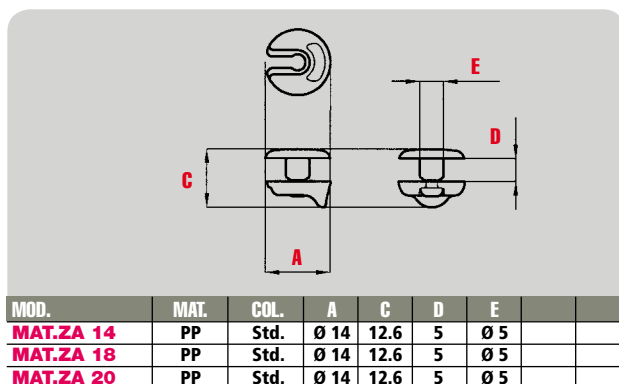
MOD.	MAT.	COL.	A	C	D	E
MAT.ZA 14	PP	Std.	Ø 14	10.3	2.5	Ø 5
MAT.ZA 18	PP	Std.	Ø 14	10.3	2.5	Ø 5
MAT.ZA 20	PP	Std.	Ø 14	10.3	2.5	Ø 5

RA 14/3.5



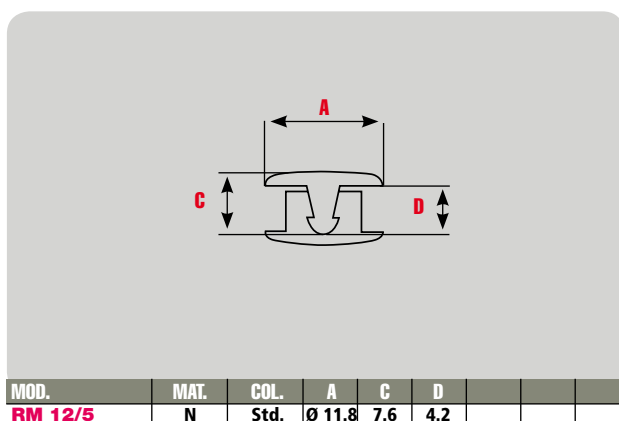
MOD.	MAT.	COL.	A	C	D	E
MAT.ZA 14	PP	Std.	Ø 14	11.1	3.5	Ø 5
MAT.ZA 16	PP	Std.	Ø 14	11.1	3.5	Ø 5
MAT.ZA 20	PP	Std.	Ø 14	11.1	3.5	Ø 5

RA 14/5

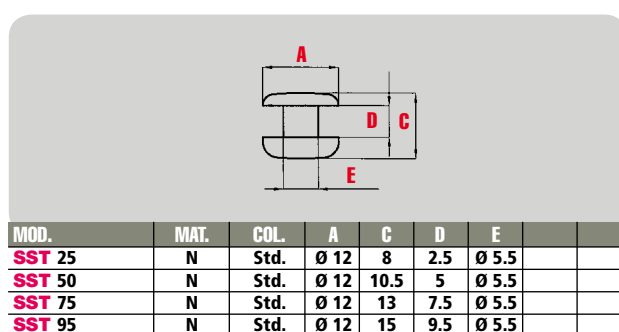


Articolo RA disponibile solo in matarozza
Article RA available only on tree

RM 12/5



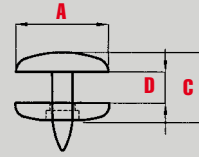
SST



RVA/12



Applicazione con punzone (a richiesta)
Application by tool (at request)



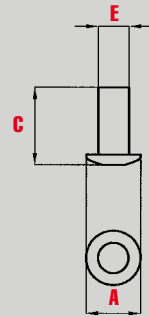
MOD.	MAT.	COL.	A	C	D			
RVA/12	A	Std.	Ø 12	9	2/4			

RIVETTI AUTOMATICI
AUTOMATIC RIVET

RP

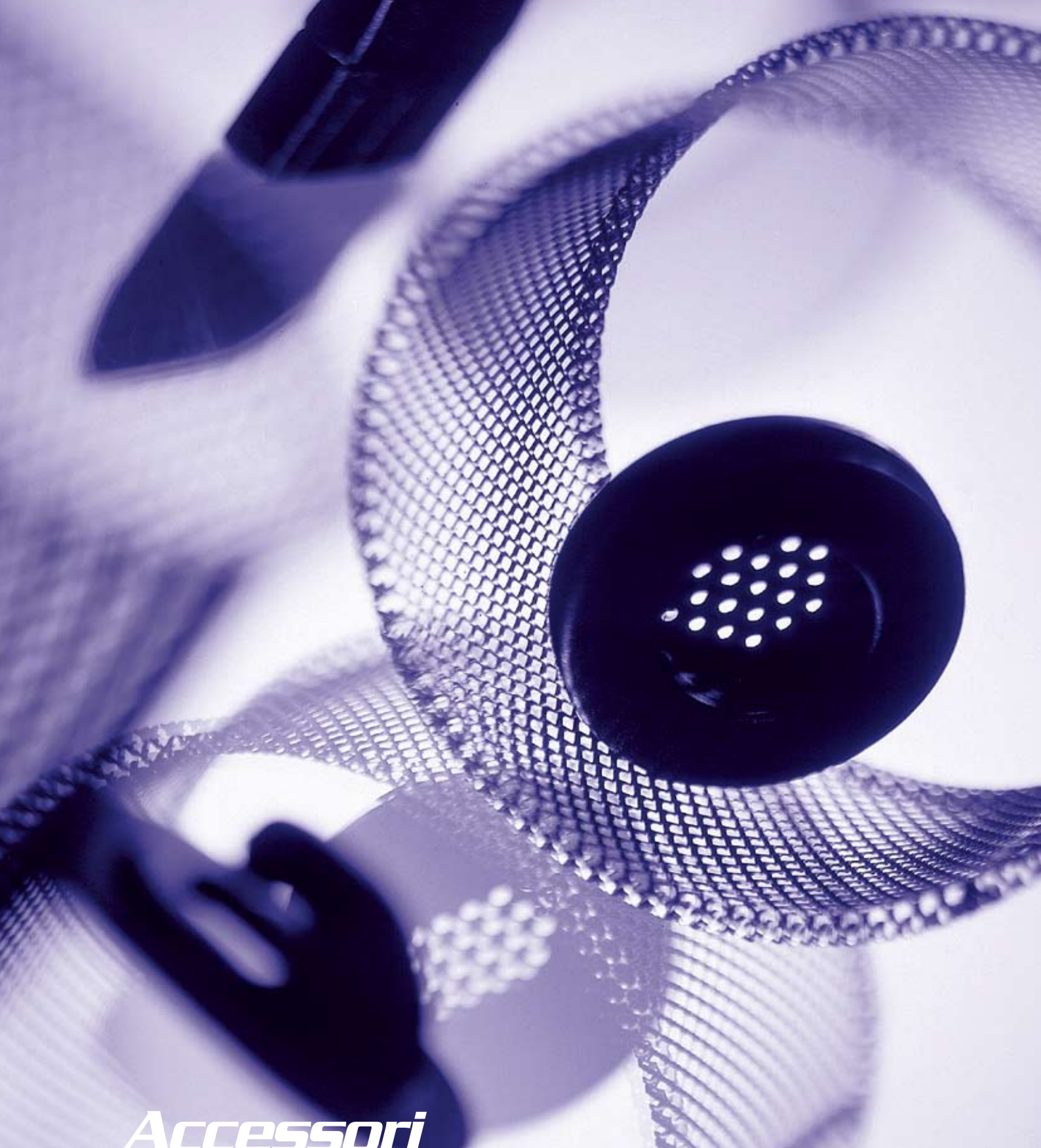


Applicazione con punzone (a richiesta)
Application by tool (at request)



MOD.	MAT.	COL.	A	C	E			
RP 4/6/8	A	Std.	Ø 7.8	7.5	Ø 3.7			
RP 7	A	Std.	Ø 6.8	9.8	Ø 3.7			



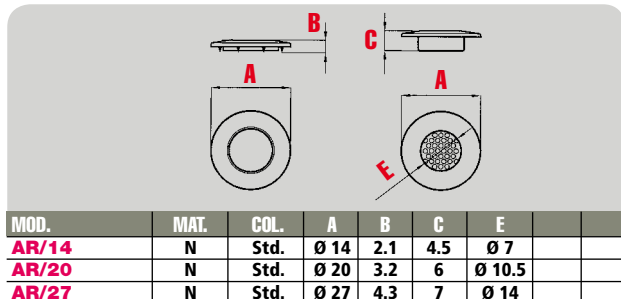


Accessori
Accessories

AR



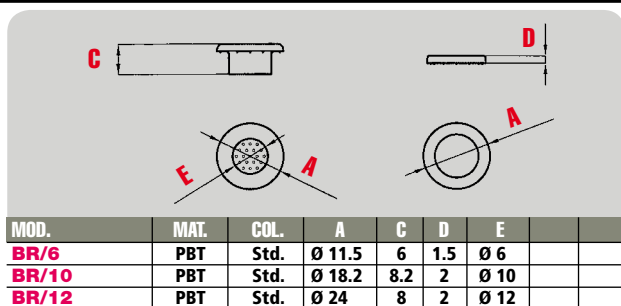
Applicazione con punzone (a richiesta)
Application by tool (at request)



BR/6 - BR/10 - BR/12



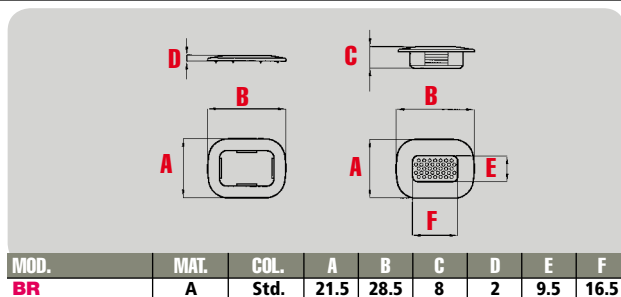
Applicazione con punzone (a richiesta)
Application by tool (at request)



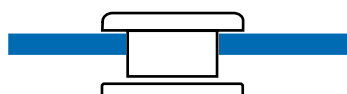
BR



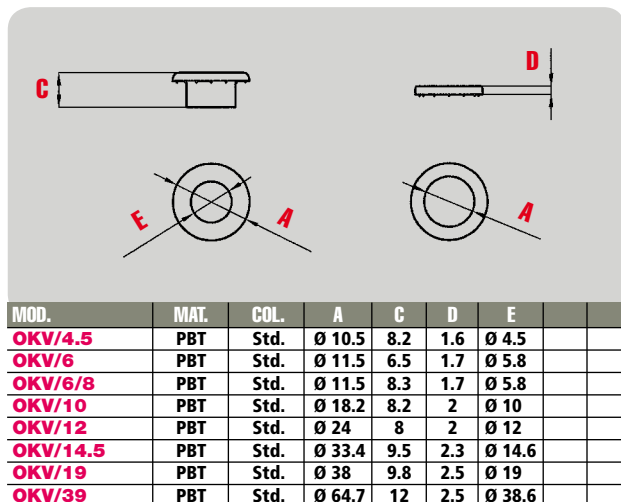
Applicazione con punzone (a richiesta)
Application by tool (at request)



OKV



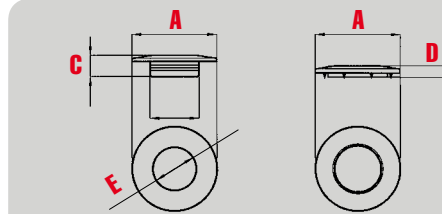
Applicazione con punzone (a richiesta)
Application by tool (at request)



OKV/15



Applicazione con punzone (a richiesta) • *Application by tool (at request)*

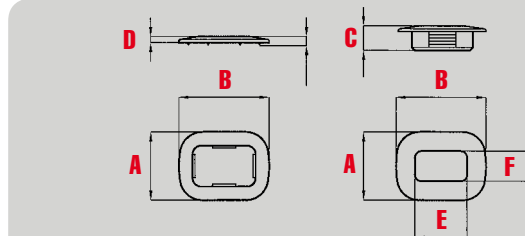


MOD.	MAT.	COL.	A	C	D	E		
OKV/15	N	Std.	Ø 27	7	2.3	Ø 15.5		

EL

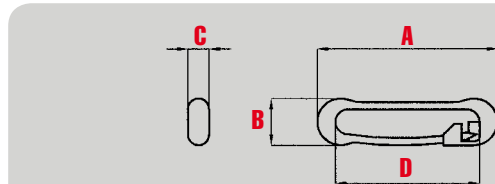


Applicazione con punzone (a richiesta) • *Application by tool (at request)*



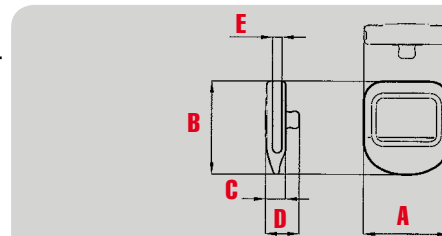
MOD.	MAT.	COL.	A	B	C	D	E	F
EL	A	Std.	21.5	28.5	8	2	16.5	9.5

PIN



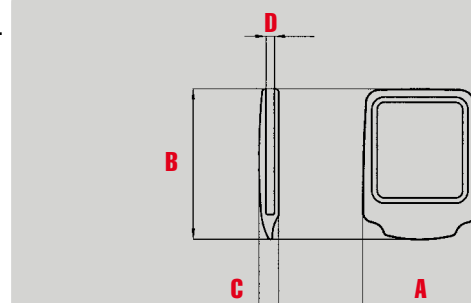
MOD.	MAT.	COL.	A	B	C	D		
PIN	A	B	25	6.5	3	20		

PLK/20



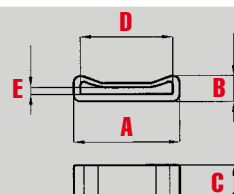
MOD.	MAT.	COL.	A	B	C	D	E	F
PLK/20	N	Std.	22	24	5	8.5	2.5	

PLK/30



MOD.	MAT.	COL.	A	B	C	D		
PLK/30	N	Std.	32	42.5	5.5	2.5		

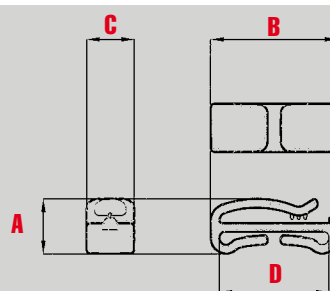
PSN



MOD.	MAT.	COL.	A	B	C	D	E
PSN 20	E	Std.	25	6.7	10.8	21.2	1.9
PSN 25	E	Std.	29.8	7.3	10.8	26	1.9
PSN 30	E	Std.	35.5	8.8	12	30.7	1.9
PSN 40	E	Std.	45.5	9.1	12	40.8	1.9

**PASSANTI APERTI
QUICK SLIP KEEPER**

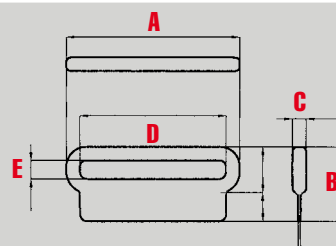
SK



MOD.	MAT.	COL.	A	B	C	D
SK 25	N	B	12.5	29.4	11	25.4
SK 40	N	B	14.4	44.5	11	40.5

**PASSANTI CUCIBILI
SEWING LOOPS**

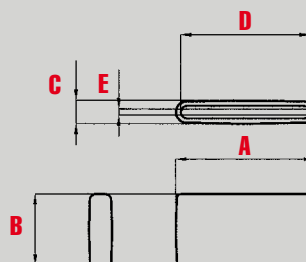
PSL



MOD.	MAT.	COL.	A	B	C	D	E
PSL 25	N	Std.	33.1	23.6	3.8	25.5	6
PSL 40	N	Std.	48	33.5	4	40.2	6
PSL 50	N	Std.	60.4	36.1	4.8	51	6

**PUNTALI
BELT ENDS**

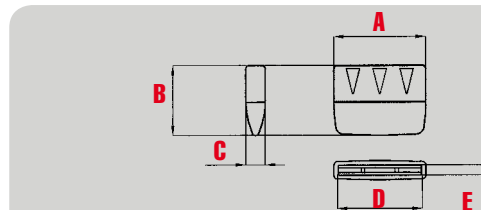
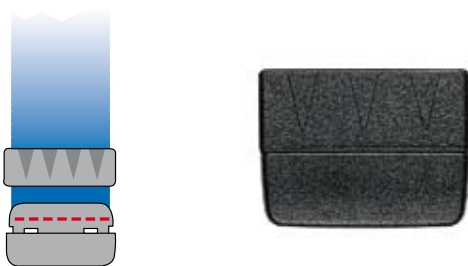
PCF



MOD.	MAT.	COL.	A	B	C	D	E
PCF/35	N	Std.	39	20	6.5	36.5	1.5

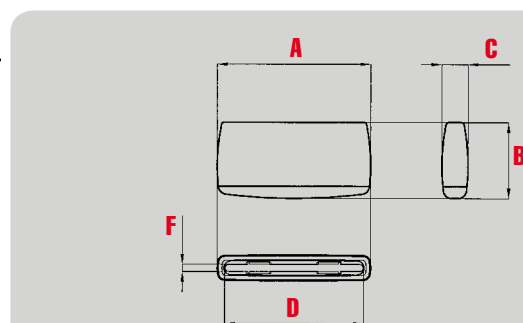
PUNTALE BELT ENDS

PC



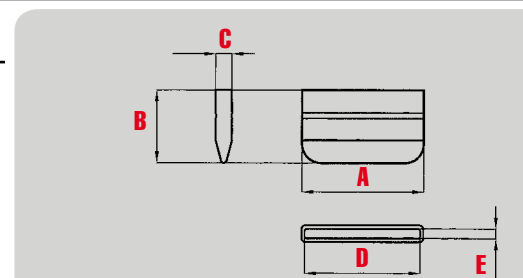
MOD.	MAT.	COL.	A	B	C	D	E
PC 20	N	Std.	22.5	20	6	20.5	1.5
PC 25	N	Std.	27.5	20	6	25.5	1.5
PC 30	N	Std.	32.7	20	6	30.4	1.5
PC 40	N	Std.	42.7	20	6	40.4	1.5

QL



MOD.	MAT.	COL.	A	B	C	D	F
QL 25	N	Std.	29	19.5	7.1	25.5	1.8
QL 40	N	Std.	44.5	22	7.6	40.3	2.15

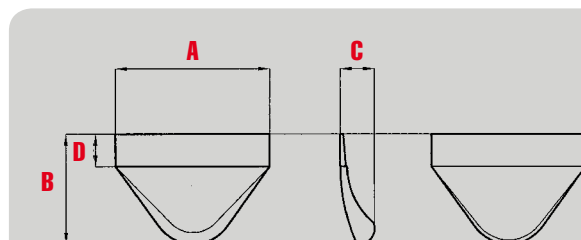
PNT



MOD.	MAT.	COL.	A	B	C	D	E	F
PNT 30	PP	Std.	32	19	4.3	30.5	2.5	
PNT 40	PP	Std.	42	21.3	4.3	40.5	2.5	

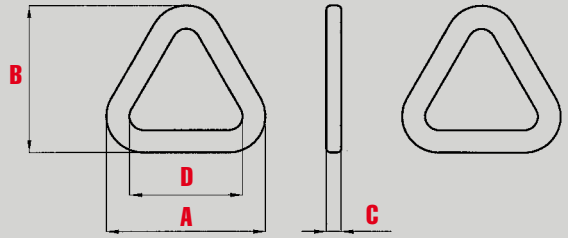
PUNTALE TONDI ROUND BELT ENDS

PT



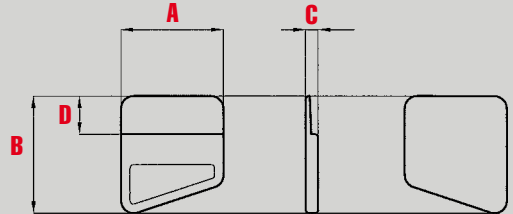
MOD.	MAT.	COL.	A	B	C	D
PT 40	GTR	B	40.5	29	9	8.5
PT 55	GTR	B	58.5	38	12	10

TSB/25



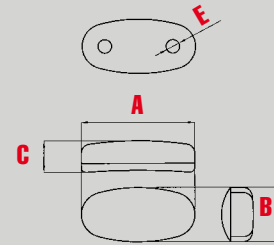
MOD.	MAT.	COL.	A	B	C	D
TSB/25	N	Std.	38.6	35.8	3.6	27.5

PPS/25



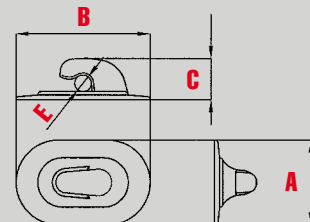
MOD.	MAT.	COL.	A	B	C	D
PPS/25	PP	Std.	25	28.8	3	9.4

SG 2/3



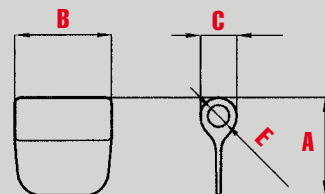
MOD.	MAT.	COL.	A	B	C	E
SG 2/3	N	Std.	25	12	7	Ø 3

GC20/30



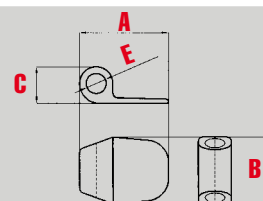
MOD.	MAT.	COL.	A	B	C	E
GC20/30	NIR	Std.	20.2	32	10	Ø 4

TUB



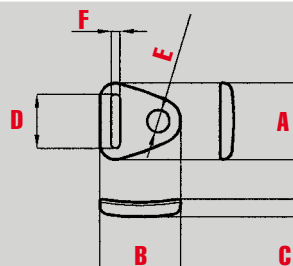
MOD.	MAT.	COL.	A	B	C	E
TUB	E-NIR	Std.	20	20	8	Ø 4.5

TUB-SA/15



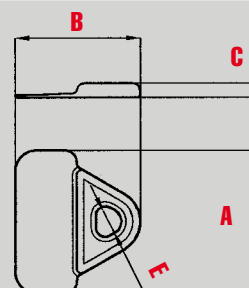
MOD.	MAT.	COL.	A	B	C	E
TUB-SA/15	NIR	Std.	20	15	8.2	Ø 4.5

PLT10/5



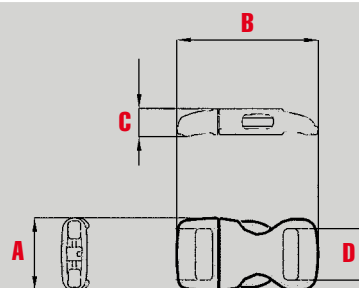
MOD.	MAT.	COL.	A	B	C	D	E	F
PLT10/5	NIR	Std.	17	18	3.9	12	Ø 5	2

PSC-N/100



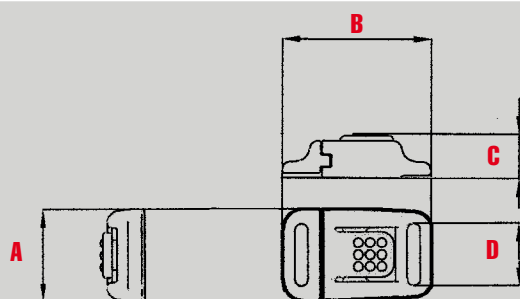
MOD.	MAT.	COL.	A	B	C	E
PSC-N/100	N	Std.	30	26.5	3	Ø 5.2

SL/10



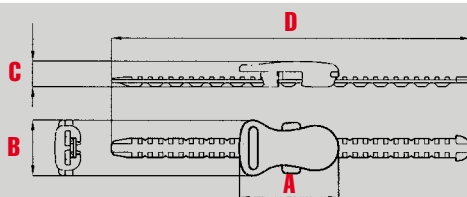
MOD.	MAT.	COL.	A	B	C	D
SL/10	A	Std.	15.5	30	6	11

CB/10



MOD.	MAT.	COL.	A	B	C	D
CB/10	A	Std.	15.5	25.2	7.5	10.5

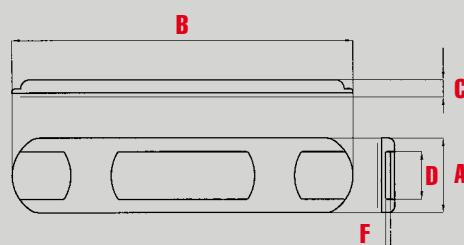
SLIDE



MOD.	MAT.	COL.	A	B	C	D	E	F
SLIDE 60	A + N	Std.	29	16	7.5	63		
SLIDE 80	A + N	Std.	29	16	7.5	81		
SLIDE 100	A + N	Std.	29	16	7.5	105		

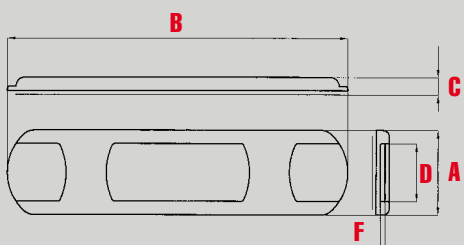
**SPALLACCI
SHOLDER PADS**

SP/16



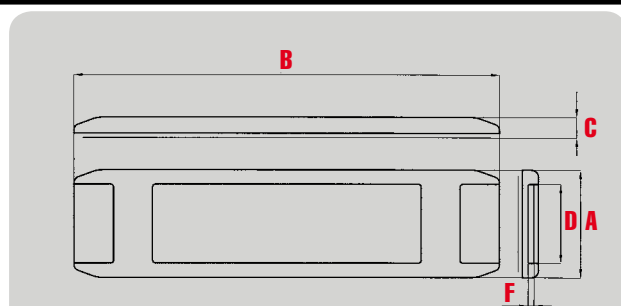
MOD.	MAT.	COL.	A	B	C	D	F
SP/16	E	Std.	27	113	5.8	18	1.8

SP/20



MOD.	MAT.	COL.	A	B	C	D	F
SP/20	E	Std.	32	128	6.5	21.8	1.8

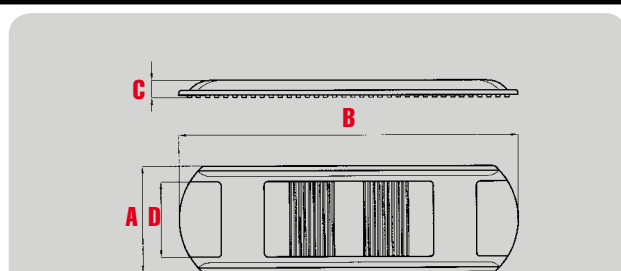
SP/25



MOD.	MAT.	COL.	A	B	C	D	F
SP/25	E	Std.	36.6	145	7	26.8	2



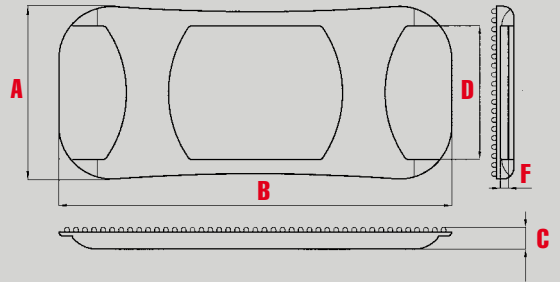
SPN



MOD.	MAT.	COL.	A	B	C	D
SPN/30	E	Std.	44.5	142	7	31.5
SPN/40	E	Std.	55	140	7	41



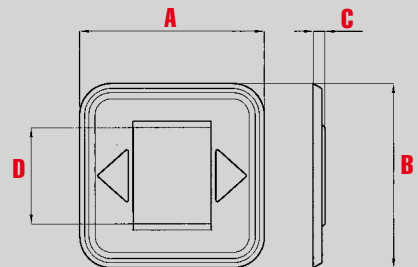
SP/50



MOD.	MAT.	COL.	A	B	C	D	F
SP/50	E	Std.	65	149	8.3	50.2	3



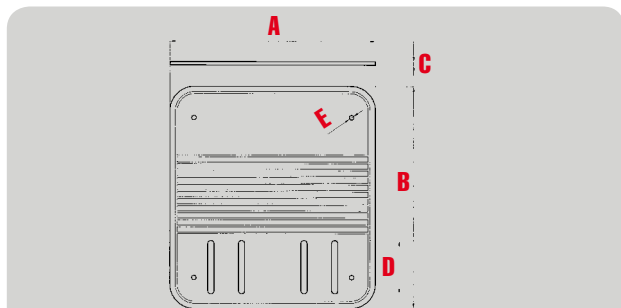
PF/30



MOD.	MAT.	COL.	A	B	C	D
PF/30	E	Std.	59	59	3.8	31



CM



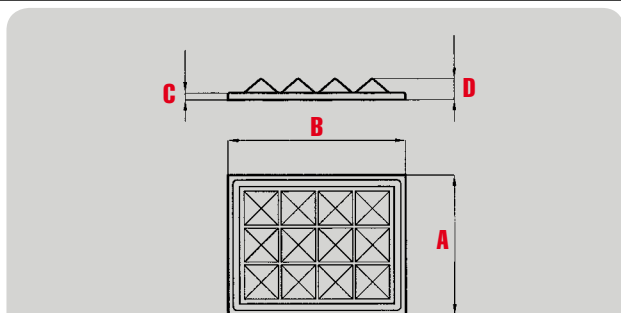
MOD.	MAT.	COL.	A	B	C	D	E
CM/30	E	Std.	117	127	1.9	30.4	Ø 2.6
CM/40	E	Std.	138	127	2.9	41	Ø 3



Applicabili bottoni automatici Press/14 - Kappa/14
Attachable with snap fasteners Press/14 - Kappa/14

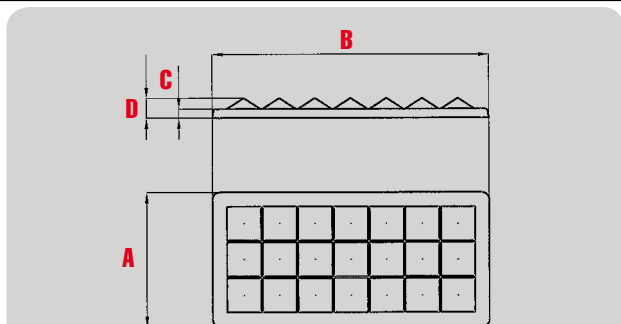
**PIEDINI
BASE STUDS**

PRC



MOD.	MAT.	COL.	A	B	C	D
PRC	E	B	39.2	49.5	1.9	5.9

PRD/21

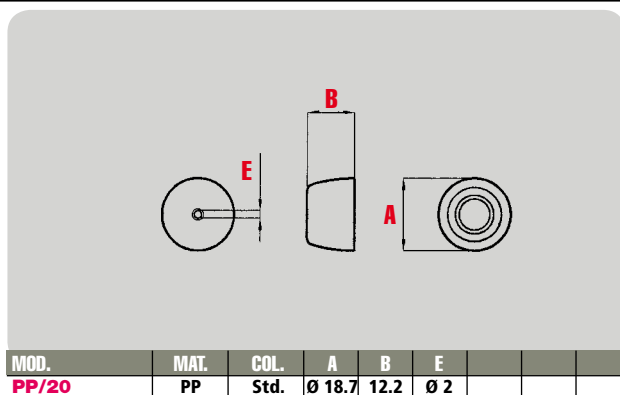


MOD.	MAT.	COL.	A	B	C	D
PRD/21	E	B	37.5	77.5	2.5	5.5

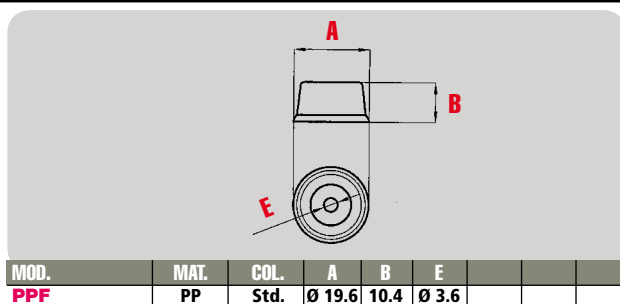
PP/20



Applicazione con punzone a richiesta
Application by tool at request



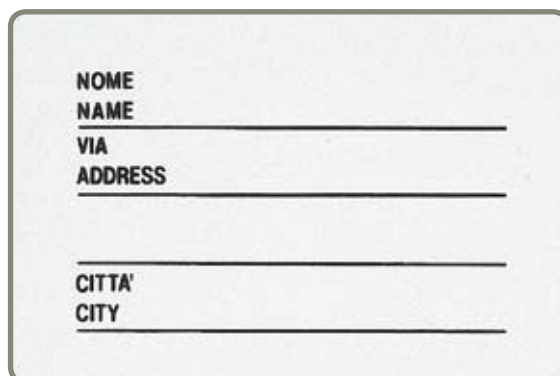
PPF



TAG

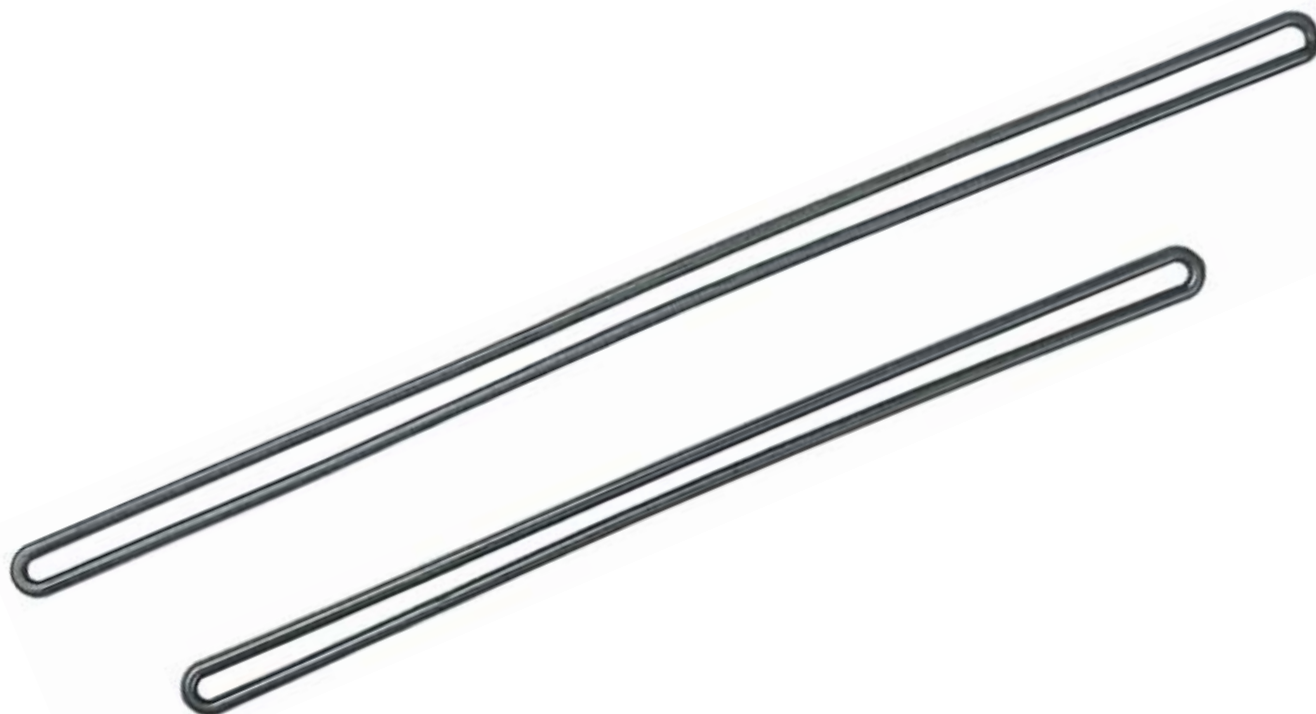


CARD PER TAG



LAC

MOD.	MAT.	COL.	mm					
LAC/1	PP	Std.	180					
LAC/2	PP	Std.	140					



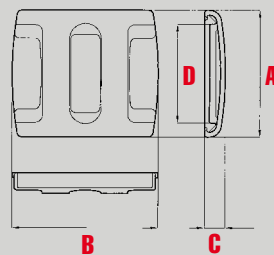
CPA



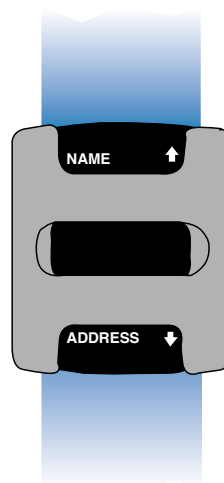
CARD PER CPA

NOME	_____
NAME	_____
VIA	_____
ADDRESS	_____
CITTA'	_____
CITY	_____

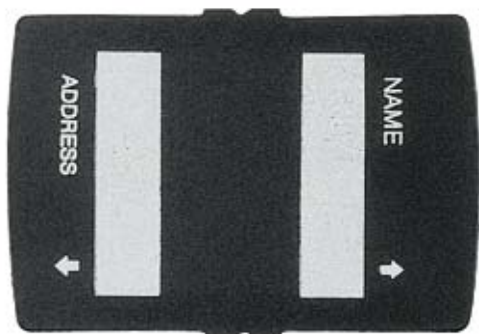
ID/40



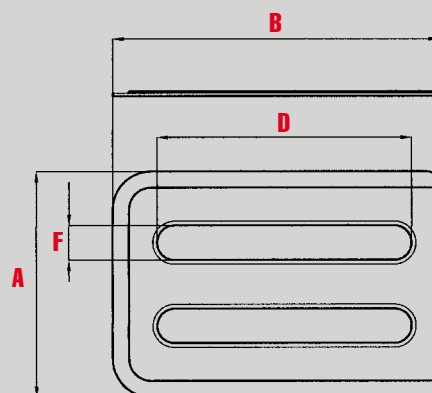
MOD.	MAT.	COL.	A	B	C	D
ID 40	N	B	52	60	8.5	40.5



ID/CARD

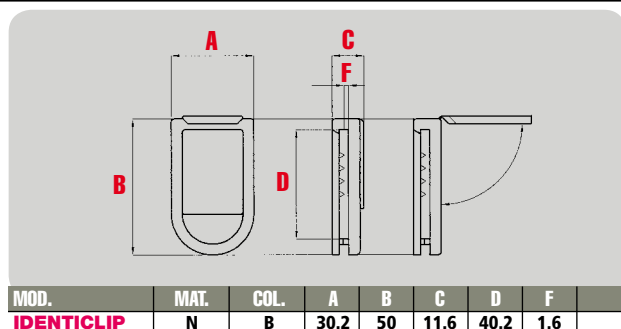


PORTANOME 90X65



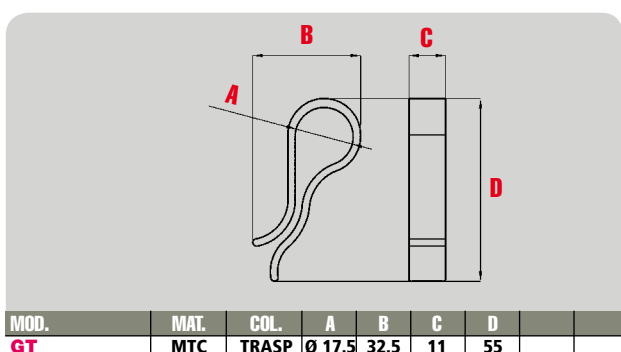
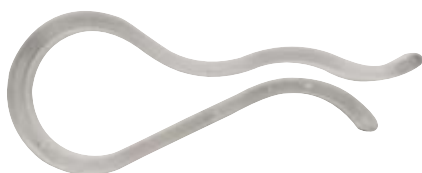
MOD.	MAT.	COL.	A	B	D	F
PORTANOME	E	B	62.5	90	70	9.5

IDENTICLIP

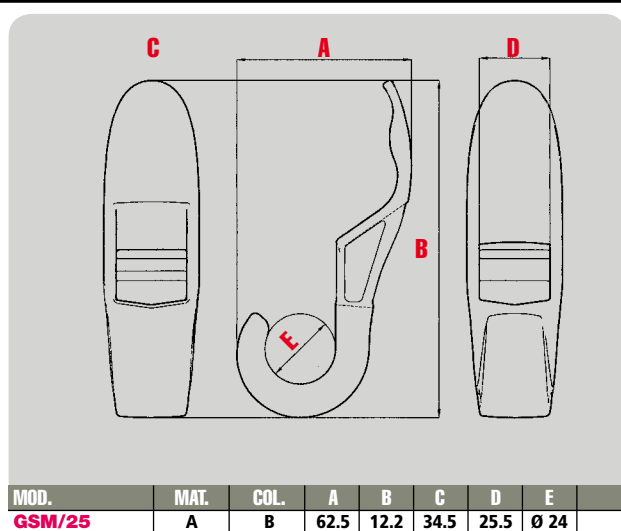


**ACCESSORI
ACCESSORIES**

GT



GSM/25



NYLON 6 - 6/6 PROPRIETÀ

Il Nylon assorbe il 2,5% del suo peso per raggiungere il punto esatto di equilibrio. La differenza tra Nylon "umidificato" e "secco" è fondamentale per i test di resistenza che vengono effettuati in una condizione di equilibrata umidità.

- Alta resistenza meccanica
- Ottima rigidità
- Ottima stabilità dimensionale a caldo
- Eccellente tenacità anche a temperature sotto zero
- Buona resistenza al fuoco
- Buona resistenza agli oli, grassi e solventi
- Buona tingibilità

ACETALICA PROPRIETÀ

- Alta rigidità
- Alta resistenza meccanica
- Buone proprietà elastiche
- Eccellente resistenza all'urto
- Buona resistenza agli oli, grassi e solventi
- Basso assorbimento d'acqua

POLIPROPILENE PROPRIETÀ

- Eccellente resistenza chimica incluso gli acidi
- Equilibrato rapporto tra tenacità, rigidità, durezza
- Basso assorbimento d'acqua

POLIESTERE PROPRIETÀ

- Alta rigidità e durezza superficiale
- Bassa tendenza al creep
- Elevata temperatura di distorsione nel breve periodo fino a 200 °C
- Buona resistenza all'abrasione
- Buone proprietà isolanti
- Minimo assorbimento d'acqua
- Buona resistenza chimica
- Buona resistenza all'impatto a bassa temperatura

NYLON 6 - 6/6 PROPERTIES

Nylon will absorb 2.5% of its own body weight to achieve its equilibrium point. The difference between a "wet" and "dry" Nylon is substantial for property testing specification that are made in a "wet" equilibrium condition.

- High mechanical strength
- Great rigidity
- Great stability to heat
- Excellent toughness even at subzero temperatures
- Good fire behaviour
- Good resistance to oils, grease and solvents
- Dyes very easily

ACETAL PROPERTIES

- High rigidity
- High mechanical strength
- Good elasticity
- Excellent abrasion resistance
- Good resistance to oils, grease and solvents
- Low water absorption

POLYPROPYLENE PROPERTIES

- Excellent chemical resistant including acids
- Ideal combination of medium strength and creep strength
- Low water absorption

POLYESTER PROPERTIES

- High rigidity and hardness
- Low tendency to creep
- Short term heat distortion temperature
- Good abrasion resistance
- Good insulation properties
- Minimal water absorption
- Good chemical resistance
- Good impact strenght at low temperatures

Tabella comparativa materiali

2M material comparative property table

PROPERTY	UNIT	NYLON		ACETAL	PP	PBT
		PA6	PA66	POM	CO	PBT
MECHANICAL						
Tensile strength at Break 23 °C	MPa	35	40	64	22	-
Tensile modulus	MPa	1100	1600	2600	1400	2600
Tensile strain at break	%	80	200	32	50	-
Flexural modulus	MPa	1000	1300	2450	1050	2200
Charpy unnotched impact strength	kJ/m ²	NB	NB	-	NB	NB
Charpy notched impact strength	kJ/m ²	-	-	5,5	7	< 10
THERMAL						
Melting point	°C	222	263	166	162	225
Temperature range	°C	-40/+80	-40/+80	-40/+80	-15/+80	-40/+100
MISCELLANEOUS PROPERTIES						
Density	g/cm ³	1,14	1,14	1,41	0,9	1,31
Water Absorption 24hrs at 24 °C	%	1,3	1,2	0,65	0	0,2

NOTE: I DATI RIPORTATI SONO INDICATIVI E RIFERITI AI MATERIALI DA NOI UTILIZZATI.

NOTES: FIGURES QUOTED ARE AN AVERAGE INDICATION ONLY AND ARE REFERRED TO MATERIALS WE ARE MANUFACTURING.